

Create, customize, and connect with the eCopy Desktop™ SDK

eCopy Desktop SDK

The eCopy Desktop Software Development Kit (SDK) includes tools that enable developers to extend the capabilities of eCopy Desktop, an office productivity application that offers a rich feature set for capturing, combining, editing, and securing scanned documents and PDF files through an intuitive, user-friendly interface.

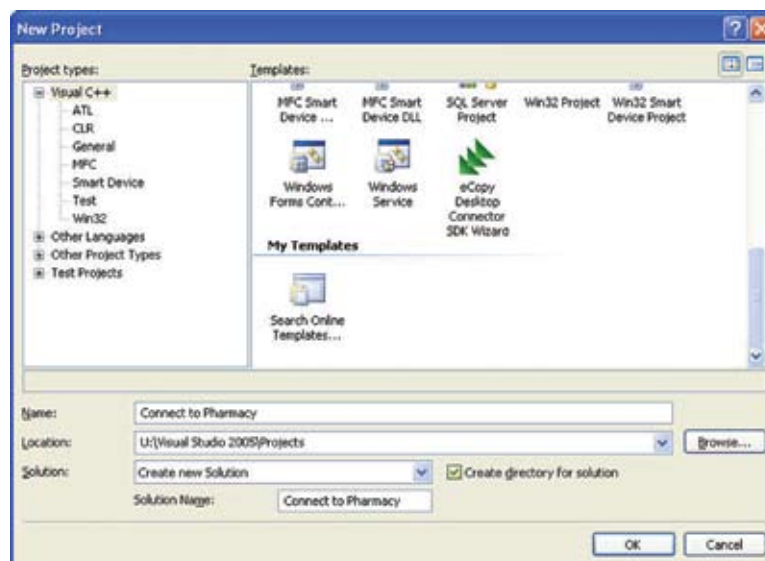
Increasingly, companies are converting paper documents to digital image files. This trend is driving the need for solutions integrated with business applications that give professionals the tools to work with document images within their electronic workflows -- to get those documents and the data contained within them into the systems on which businesses run.

With the eCopy Desktop SDK, developers can quickly build Connectors to business systems, document and records management applications, workflow, collaboration, OCR systems and more.

The eCopy Desktop SDK provides a code generation wizard, API library, documentation, and sample code.

Features and benefits of the eCopy Desktop SDK include:

- Connector Wizard helps to get to market faster by giving developers a jump start on integrating a feature rich PDF and document image productivity tool into their applications.
- Sample code reduces the development cycle by providing developers a model to learn from.
- Enables developers to leverage the capabilities of eCopy Desktop eliminating the need to reinvent the wheel and develop a custom PDF editing and document capture tool.



Connector Wizard helps to get to market faster by giving developers a jump start on integrating a feature rich PDF and document image productivity tool into their applications.

Benefits of the eCopy Desktop SDK

- Extends user capabilities through integration of eCopy Desktop with other software applications and backend systems
- Enables the creation of custom connectors to add new functionality to the current eCopy Desktop software
- Application wizard to get started quickly
- Published API to access rich feature set of eCopy Desktop
- Well documented API with code samples minimizes trial and error
- Gain access to eCopy Desktop viewing and document manipulation capabilities
- Leverage the annotations and searchable text
- Create applications that easily work with PDF documents

eCopy, Inc. (Corporate Headquarters)

One Oracle Drive
Nashua, NH 03062
USA
Tel: +1.603.881.4450
Fax: +1.603.881.4399
info@ecopy.com
www.ecopy.com

eCopy Europe

1 Chalfont Park
Gerrards Cross
Buckinghamshire, SL9 0GA
United Kingdom
Tel: +44 (0) 1753 895 000
Fax: +44 (0) 1753 895 001
europa@ecopy.com
www.ecopy.com/europe

eCopy Asia Pacific

Level 21, 201 Miller Street
North Sydney
NSW 2060 Australia
Tel: +61.2.9909.0938
Fax: +61.2.9025.3777
asiapacific@ecopy.com
www.ecopy.com/asiapacific

eCopy KK

Beniya Bldg. 4F
4-3 Kojimachi
Chiyoda-ku
Tokyo 102-0083
Tel: +81 3 5215 7511
Fax: +81 3 5215 7515
japan@ecopy.com
www.ecopy.com/japan

Requirements

Access to the eCopy Desktop SDK requires membership in the eCopy Connections Alliance Program (eCAP)

The eCopy Desktop SDK is intended for independent software vendors (ISVs), system integrators, software developers, and value-added resellers with a background in Microsoft C++, .NET 2003, or 2005.

The eCopy Desktop SDK assumes that users have the following skills and knowledge:

- C++ (detailed knowledge)
- COM (basic knowledge)
- ATL and WTL (understanding of general concepts)
- API and services presented by the backend application (detailed knowledge)
- Windows API (general knowledge)

© 2008 eCopy, Inc.

eCopy, the eCopy logo, eCopy ScanStation, eCopy Desktop, eCopy Quick Connect, eCopy Xpert Compression, and ShareScan are registered trademarks of eCopy, Inc. All other terms and products are trademarks or registered trademarks of their respective owners and are hereby acknowledged.

8/08
P/N: ECOM-0273